



# City of Winter Park



## Park Avenue Refresh

A Comprehensive Outlook

Prepared By Stringfellow Planning & Design



# Project Intent

Refreshing Park Avenue's landscape, hardscape and lighting for consistency.



## Summary

# Staff Recommendations

### Lighting

1. Dark Sky Compliant
2. Timers & Photocells
3. Speakers & Outlets Top/Bottom
4. Integrated Signage
5. Irrigation for Hanging Plants
6. Accent Light Installations
7. Wifi Equipment Compatible
8. Entry lighting into Central Park

### Landscape / Hardscape

1. Seasonal Plantings for Color
2. Remove unhealthy understory trees
3. Repair/Replace Planters
4. Coordinated Planters / Pots
5. Trash Cans and Benches
6. Repair & Expand Irrigation
7. Evaluate Bollards & alternatives
8. Drainage markers & fix problem areas

### Technology

1. Hidden Audio/Speakers
2. Wifi equipment
3. Cameras in key locations
4. Conduit & Low Voltage cleanup
5. Kiosk Removal
6. Remote access/control

## Summary

# Stakeholder Recommendations

### Lighting

1. Consistency across locations
2. Pests/Maintenance considerations
3. Spring City lighting/Dark Sky
4. Declutter poles where possible
5. Review CSX lighting

### Landscape / Hardscape

1. Seasonal color
2. Schedule meeting with stakeholders
3. Signage / Wayfinding consolidated
4. Consistency along the full corridor

### Exemplar Communities

1. Windsor
2. Alys Beach
3. Serenbe
4. Worth Ave

### Short Term Opportunities

1. Pressure Washing
2. Code Enforcement
3. Communication opportunities

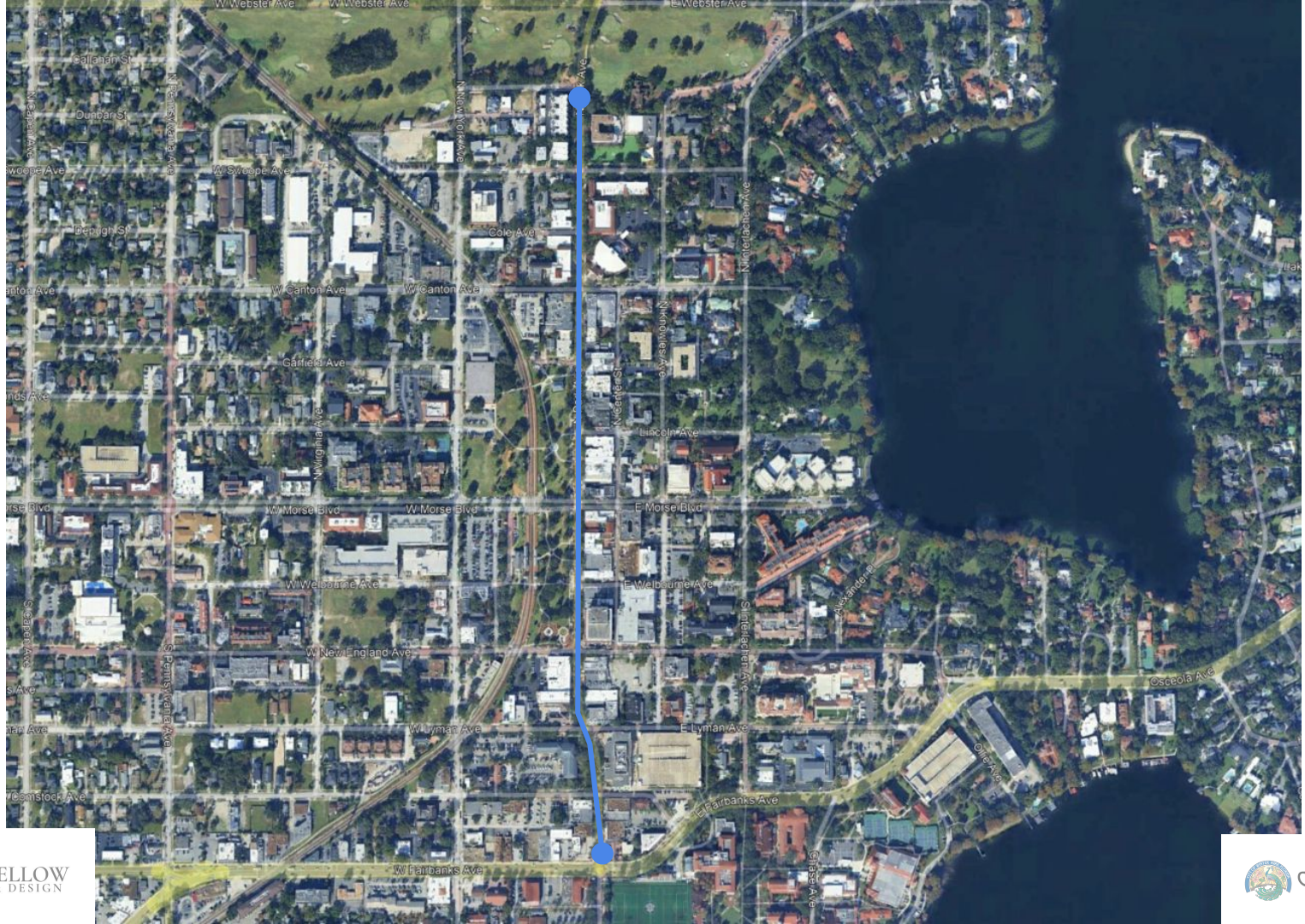


## Summary

# Survey Results

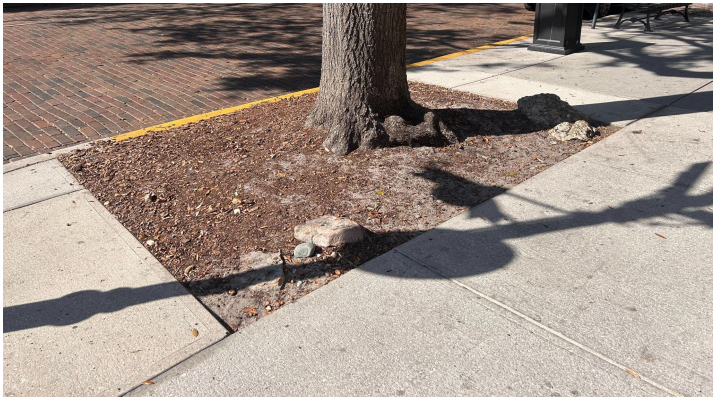
1. The Kiosks are not utilized (70%)
2. Rideshare is fairly uncommon (~30% of respondents)
3. 7/10 were satisfied with the level of landscaping
4. 60% of the respondents find the wifi valuable
5. Concerned about parking and more bike racks
6. Recommended making Park a pedestrian only street
7. Street Lighting more consistent
8. Designated Recreational/Playground Areas (Kids/Family)
9. Wayfinding
10. More frequent pressure washing and cleaning

Project Extent





# Findings





# Findings





# Findings





# Findings





# Findings





# Findings





# Findings





# Findings





Project Extent



Phase 1



# Recommendations

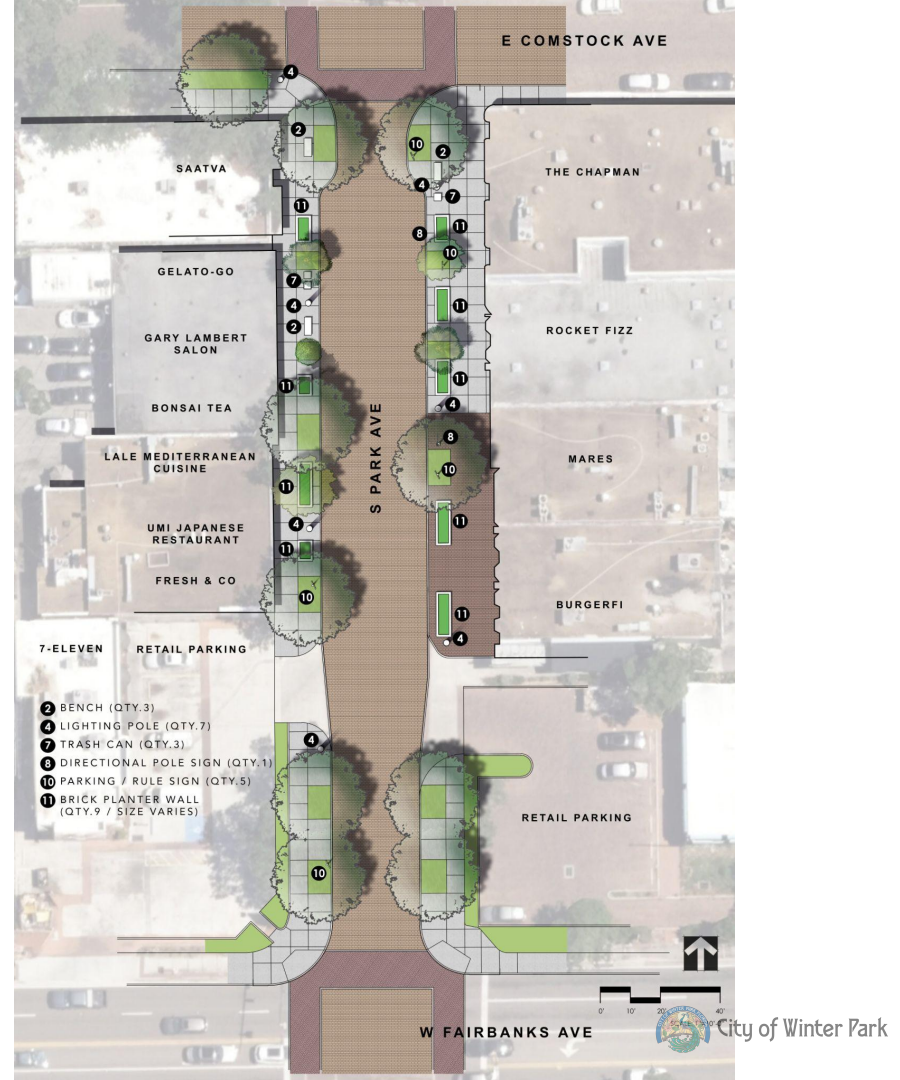




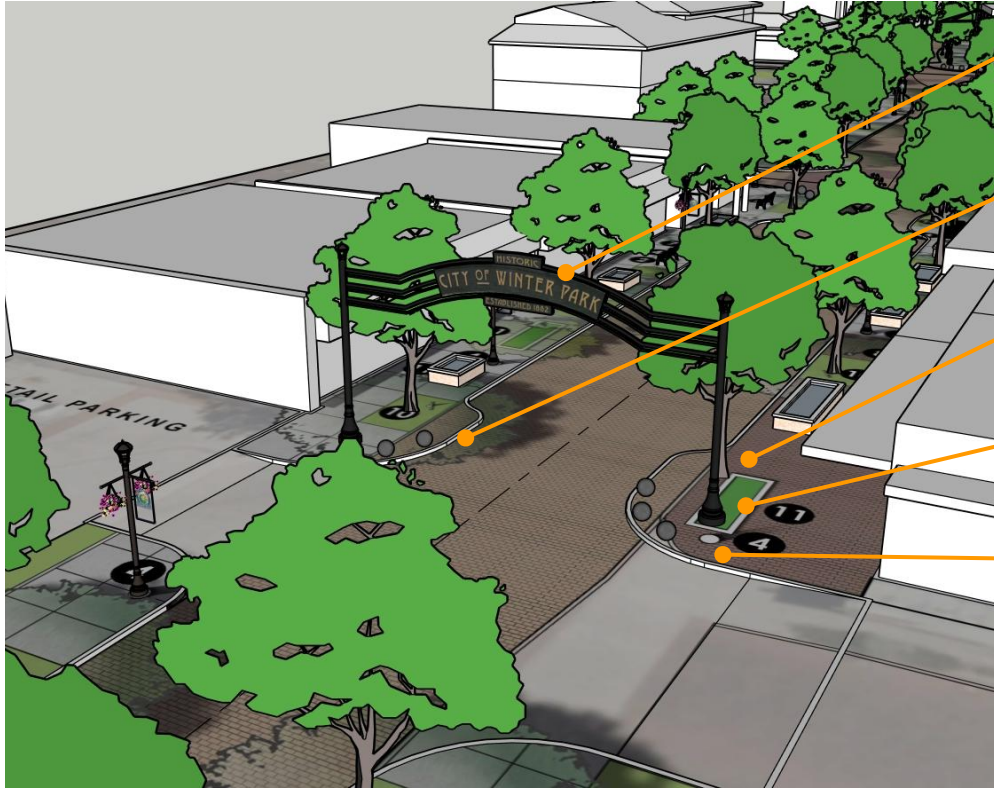
# Phase 1 - Fairbanks to Comstock

## Fairbanks - Comstock

1. Gateway Signage
2. New Electrical, Low Voltage, Irrigation
3. Remove Crepe/Palm trees in front of Rocket Fizz
4. New Live Oak Trees with root barriers, tree grate properly installed, irrigation and coordinated with light locations
5. Air Spade tree planters, add quality soil and plant 3-4 inch groundcover plants with irrigation
6. Replacement of trash cans, pots, etc
7. Updated light poles and accessories
8. 2 Bulb Outs/Curb extensions and remove “No Parking” signs
9. Repair/Replace/Remove raised planting beds
10. Eliminate non-required signage.



## Phase 1 - Fairbanks Gateway



Install Gateway Signage, include lights on pre-wired poles

Bump out curbs to calm traffic and separate parallel parking. Install safety bollards (and plant pots for seasonal color)

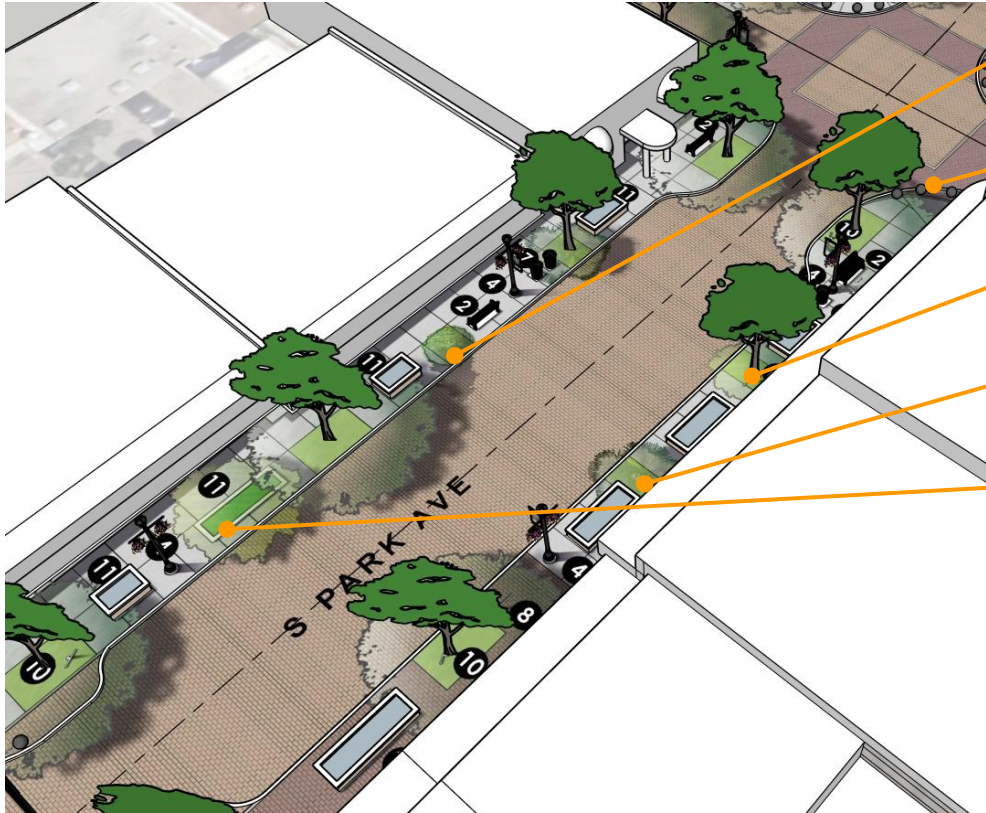
New Live Oak and bed.

Eliminate raised planter bed conflicting with Gateway sign.

Eliminate Existing Street light.



## Phase 1 - Gateway to Comstock



Eliminate small tree. Replace bed with hardscape.

Bump out curb to separate parallel parking on Comstock. Add bollards for pedestrian safety.

Eliminate Elm. Replace with Live Oak and bed.

Eliminate Palm tree. Replace bed with hardscape.

Eliminate Raised planter bed to allow for better seating at Umi.

## Phase 1 - Comstock to Lyman

### Comstock - Lyman

1. New Electrical, Low Voltage, Irrigation
2. Remove dying Laurel Oak in front of Restoration Hardware
3. New Live Oak Trees with root barriers, tree grate properly installed, irrigation and coordinated with light locations
4. Bus Stop Shelter to be replaced with rentable Vendor space or Smaller Stage? (lockable, power/water). Architecture to match the train station, new bathrooms, rose garden.
5. Air Spade tree planters, add quality soil and plant 3-4 inch groundcover plants with irrigation
6. Replacement of trash cans, pots, etc
7. Updated light poles and accessories
8. 3 Bulb Outs/Curb extensions and remove “No Parking” signs
9. Seat wall in front of Starbucks
10. *Newstand solution?*
11. Eliminate non-required signage.





## Phase 1 - Park and Comstock North



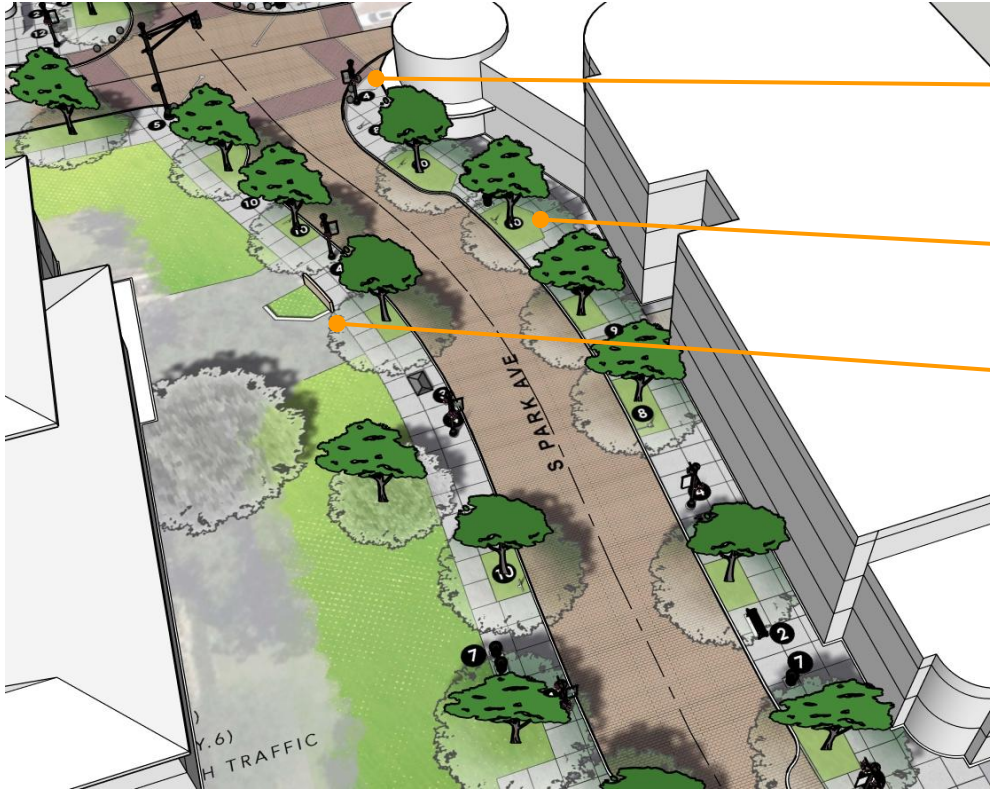
Refresh or replace bus stop with Architecture to match the train station, new bathrooms, rose garden.

Bump out curbs to calm traffic and separate parallel parking. Install safety bollards (and plant pots for seasonal color). Realign crosswalks behind bollards to create shorter crossing distances.

Replace dead Laurel Oak with Live Oak and tree grate.



## Phase 1 - Park and Lyman South (City Hall)



Bump out curbs to calm traffic and separate parallel parking. Install safety bollards (and plant pots for seasonal color). Realign crosswalks behind bollards to create shorter crossing distances.

Seat wall at larger bed(s) outside Starbucks.

Redesign City hall bench area with wall facing Park Ave. w/ lettering



## Phase 1 - Park and Garfield

### Garfield Planter bed

1. Reconfigure planter bed wall
2. Bulb Out/Curb extension planter area to allow more room for Live Oak root system.





## Summary

### Consultant & Staff Team

1. Lead Design Team (LA & Planning) -	Stringfellow Planning & Design	<b>Consultant Led</b>
2. Civil -	Appian Engineering	
3. Geotech -	Terracon	
1. Contractor -	Ovation	<b>City Led</b>
2. Underground -	HDD	
3. Irrigation Design-	Lafleur	
4. Lighting -	Landreth	
5. Electrical (lighting) -	Power Engineering	
6. Low Voltage	SEMCO Electric Company	

## Discussion

### Potential Future Projects

1. West Meadow Master Plan
2. Morse Boulevard Refresh and Gateway potential
3. New England Refresh
4. Side Street Projects ( West Lyman Exploration)
5. Whistle Stop Station

### Commissioner Input Items

1. East West Side Streets
2. Future Phasing
3. Ride Share Near Bus Stops
4. Forward-thinking infrastructure (smart city, etc)
5. Car charging stations
6. Autonomous vehicle opportunities
7. Fans and misters for seasonal cooling



